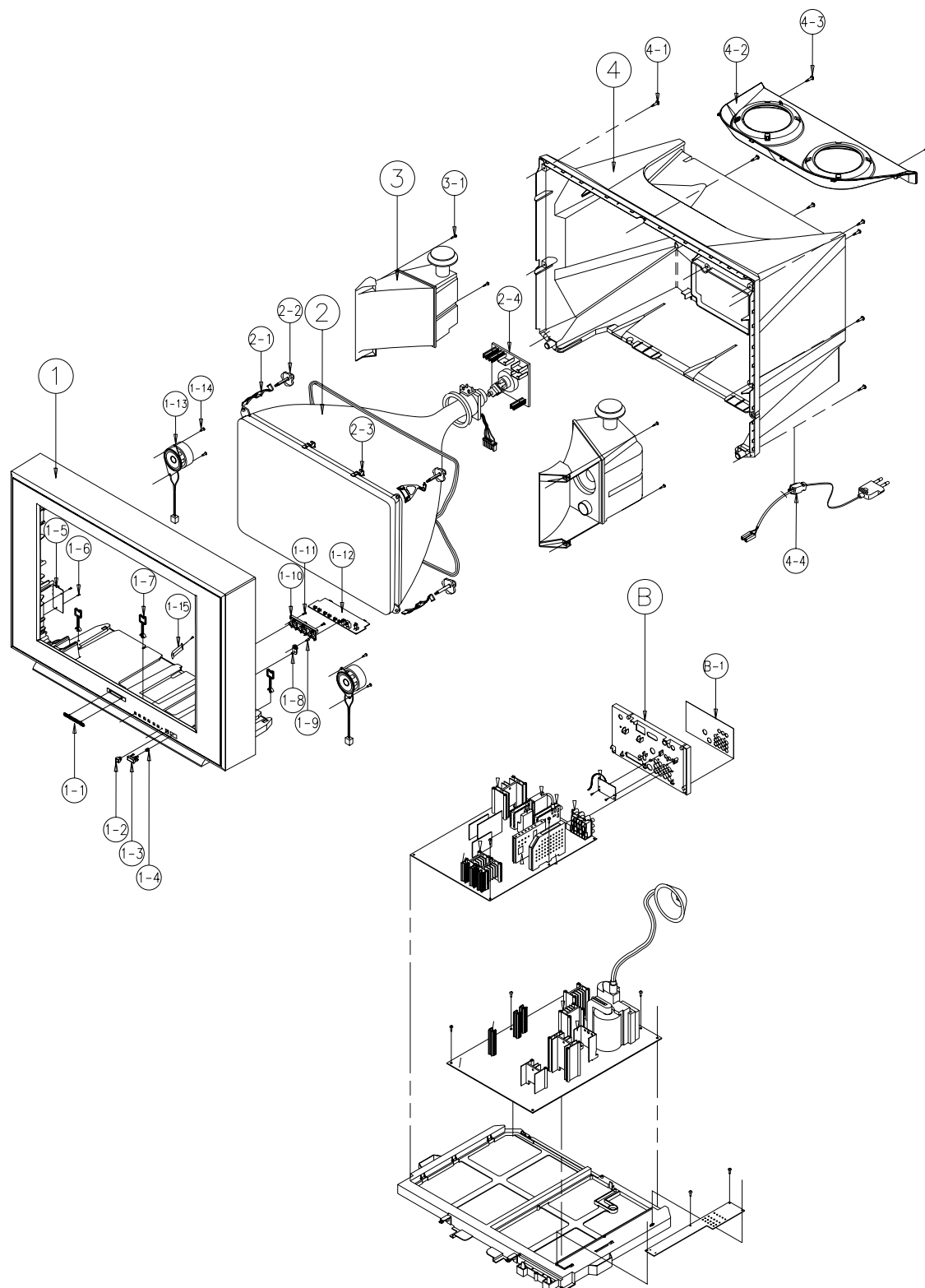


7. Exploded View & Parts List

7-1 CS29A6PFX/XSA



7-2.Parts List

No	Code No	Description & Specification	Q'ty	Remarks
1	AA64-00026Q	CABINET-FRONT;-;72A6 SCT55A SEAU,S704P+B	1	
1-1	AA64-70117B	BADGE-BRAND;AL,SS,SILVER,L65,R2000,-,-	1	
1-2	AA64-40516B	WINDOW-REMOCON;-;29A6,-,PC,V0,VIOLET,-	1	
1-3	AA64-10792C	KNOB-POWER;-;29A6,M/S SV704P+W971,ABS,HB	1	
1-4	AA61-60003J	SPRING-CS;-;SUS304,0.5,OD6,H12,N7,-,-,-	1	
1-5	AA95-00203A	ASSY-PCB,A/V SIDE;-;CS72A6,SCT55A,-,-,PA	1	
1-6	6003-001026	SCREW-TAPTITE;RH,+,B,M4,L15,ZPC(BLK),SWR	2	AV+CF
1-7	AA65-30105A	CLAMP-WIRE;NYLON 66,V2,NTR,15MM,ALL MODE	3	
1-8	AA64-40517B	INDICATOR-LED;-,-,-,ACRYL,-,CLEAR,-	1	
1-9	6003-001019	SCREW-TAPTITE;RH,+,B,M4,L12,ZPC(BLK),SWR	1	LED+CF
1-10	AA64-00028A	KNOB-CONTROL;-;29A6,SV808P+W971,ABS,HB,G	1	
1-11	6003-001019	SCREW-TAPTITE;RH,+,B,M4,L12,ZPC(BLK),SWR	2	KCON+CF
1-12	AA95-00201A	ASSY-PCB,CONTROL;-;CS72A6,SCT55A,-,-,-	1	
1-13	AA91-00098A	ASSY-HOLDER,SPK;-,-,4OHM/20W,-,29A6 T/W,	2	
1-14	6003-001019	SCREW-TAPTITE;RH,+,B,M4,L12,ZPC(BLK),SWR	4	SPKR+CF
1-15	AA61-10054A	BRACKET-CRATER;-;6277,STS304,T0.5,-,-,-	1	
2	AA03-00081A	CRT-COLOR;-;A68QCP891X003(C),-300MG,29IN	1	
2-1	AA65-30113A	CLAMP-D,COIL;NYLON 66,V2,BLK,TVI 25~29,-	4	
2-2	AA60-10050V	SCREW-ASSY;WC,HH,+,M6,L30,SWRCH18A,ZPC(S	4	CRT+CF
2-3	AA65-30017A	CLAMP-D,COIL;NYLON-66,V0,NTR,DADH300,25	2	
2-4	AA95-00281A	ASSY-PCB,CRT;-;SCT55A,29,RUSSIA,PAL	1	
3	AA91-00149A	ASSY-HOLDER,SPK;-;PP,8OHM/15W,BLK,IMPACT	1	
3-1	6003-001019	SCREW-TAPTITE;RH,+,B,M4,L12,ZPC(BLK),SWR	4	SPKR+CF
4	AA64-00027A	CABINET-BACK;-;29A6,-,HIPS,VO,BLK,-,-	1	
4-1	6003-001025	SCREW-TAPTITE;RH,+,B,M4,L20,ZPC(BLK),SWR	7	CB+CF
4-2	AA63-00005A	COVER-TOP,SPEAKER;-;29A6,-,HIPS,VO,BLK,-	1	
4-3	6003-001025	SCREW-TAPTITE;RH,+,B,M4,L20,ZPC(BLK),SWR	2	CTS+CB
4-4	AA96-20115B	ASSY-POWER,CORD;-;EP2/YES(AU),H/C400,KJP	1	
B	AA63-40275A	TERMINAL-BOARD,ANT;-;HIPS,BLK,CT3456V,V0	1	
B-1	AA64-60416B	INLAY-BACK;CS823A,SCT55A RCA,PS,T0.5,BLK	1	